

All NEW!

DilaSoft I for Windows

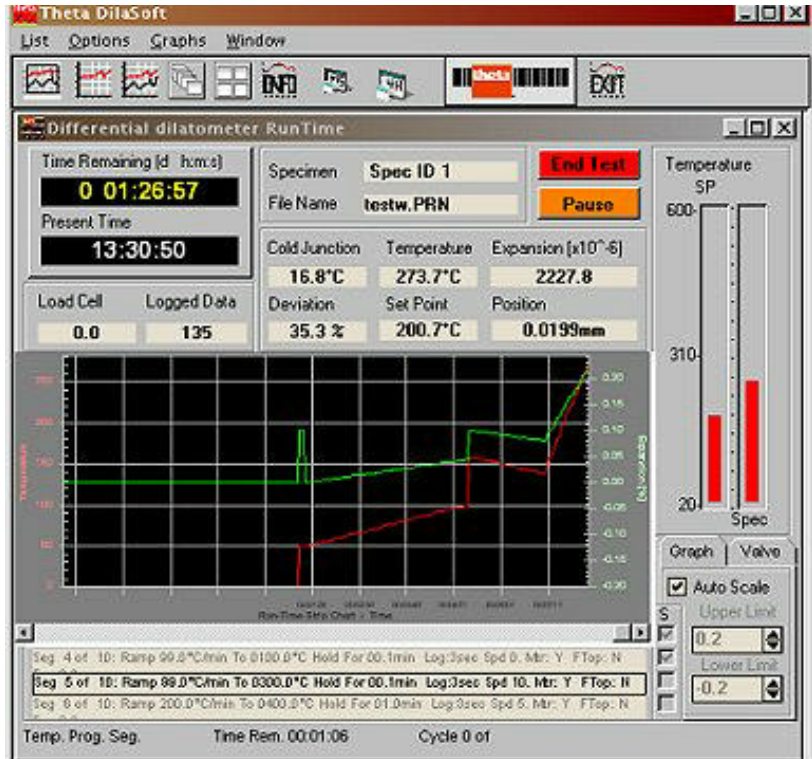
Windows Software for Theta Dilatometers, DTA/TGA, and Rotating, Parallel Plate and Bending Beam Viscometers.

Theta's latest 32 bit Windows software is **Y2K compliant** and features multiple **interactive run-time graphics displays** in a **multitasking** environment allowing experiments to run while simultaneously analyzing previous experiment data.

The run-time display shows all important information as the experiment progresses. The displays include: real-time bar graphs of setpoint and specimen temperatures, strip chart recorder of Measured Value (MV)* and temperature, temperature segment profile and much more. While the experiments are running, interactive graphs can be displayed showing MV* vs. temperature and/or MV* vs. time vs. temperature. These graphs can be moved, sized and scaled while the experiment continues to run, giving the operator all necessary information about the experiment as it is taking place.

The new **Report Generator** automatically gathers all the data about the experiment including the materials, temperature program, tables, dates, graphs and data and formats them into user selectable reports that can be saved to disk files for later use or printed immediately on the default Windows printer.

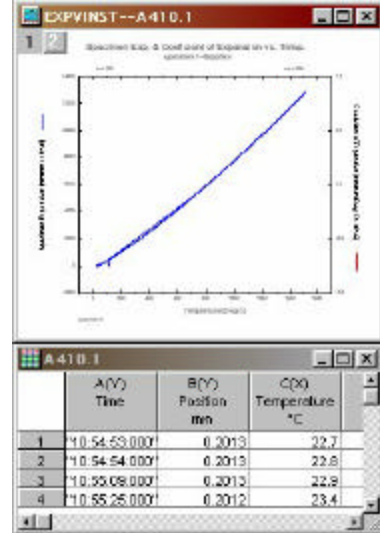
* Measured Value defined by instrument type.
 Dilatometer = Expansion. Viscometer = Viscosity.
 DTA = Temperature difference. TGA = mass. Etc.



Data analysis remains unsurpassed in the industry offering the widest array of tools, charts, graphs, tables, printouts and reports. Analysis graphs and reports can all be completely customized by the user, printed immediately or saved to disk files for later retrieval or imported into other applications.

Theta Industries has been the industry leader in thermal testing for over 30 years. We remain dedicated to bringing our customers the finest in both software and hardware to create the most advanced thermal testing equipment available.

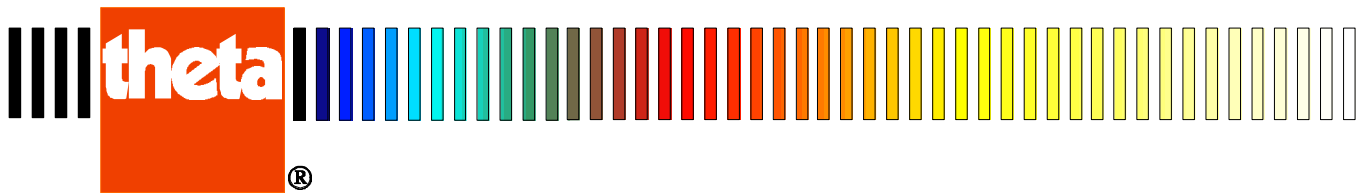
For information about the price and availability of Theta's latest software and equipment offerings, call, write, FAX or



E-mail to the address below for a prompt response.

Also see our web site www.theta-us.com for the latest news, information and demos.

Theta Industries, Inc. 26 Valley Road Port Washington NY 11050 USA
 Phone: (516) 883-4088 Fax: (516) 883-4599 Internet: <http://www.theta-us.com> E-mail: theta@theta-us.com



DilaSoft I for Windows

New Features

- Complete display of all instrument configuration options, experiment features and run-time parameters. Plus new mini-status window that displays all data but uses less screen space.
- Improved temperature profile programming 100 segments with cycling— each with its own data storage interval, ramp rate, hold time, digital switch and/or mass flow valve control, head speed (Rotating Viscometer) and more. The entire profile is displayed graphically on screen and can be printed.
- Correction Files automatically correct for any variance in equipment for exact measurements.
- User entered reference and specimen materials.
- Standard reference materials for Viscometers.
- Pre-Heat and Delayed Start.
- "Change-Over" height & deflection is a user setting that forces the software to jump to the next temperature program segment when reached, for Parallel Plate and Bending Beam Viscometers..
- Specimen length auto-length for faster experiment starts without having to measure the specimen (Dilatometer).
- Full on-line Windows help files, accessible at any time.
- Automatic data file naming for fast repetitive experiments.
- Optional use of maximum length for shrinkage calculation, valuable to glass analysis (Dilatometer).
- Optional user selectable reset temperature for safer experiment shutdown or leave the furnace at a high temperature for repeated experiments..
- Instrument calibration is fully controlled through software. A selectable calibration interval reminds the operator when the equipment requires calibration.

Quick Reports

Automatic reports:

- Summary of experiment data
- Full temperature program
- Table of results
- Full data file

Automatic charts:

- MV* vs. temperature
- Average alpha* vs. temperature
- MV* vs. time
- Temperature vs. time

Run-time Display

- Audible/visual alerts and messages (the software actually speaks, with optional hardware).
- View or edit the entire temperature program while the experiment runs.
- Experiment parameters can be changed while the experiment runs.
- Graphical LVDT positioning for added precision (Dilatometer).
- Simulated strip-chart recorder displays the last 750 measured values and temperature points in a scrollable, time-based window.
- Live displays of measured and calculated values; the current, prior and next temperature program segments; setpoint and actual specimen temperature. Plus new mini-status window that displays all data but uses less screen space.
- Multi-head Dilatometers can display the live data from all heads in the status screen or graphs.
- Icon-style toolbar and drop-down menus permit easy selection of graphs and other options.
- Run-time graphs include MV* vs. temperature, and MV* and temperature vs. time. Each graph is an independent window which can be moved, sized, printed or closed while the experiment continues executing in the background.

Data Analysis

- Compatible with Windows multi-tasking: permits experiments to run in the background while analysis is performed in the foreground.
- Floating toolbar for graph operations (zoom, point selection, etc.).
- Multiple windows for graphs and data.
- Many pre-formatted graph templates supplied for user convenience, each set corresponding to specific instrument type.
- Automatic TMA and peak detection functions.
- User selectable reference or offset temperature, decimal points and temperature scale (C, F and K).
- Adjustable data smoothing.
- Automatic temperature transition point determination and plotting.
- Complete *Table of Results* with user selectable temperature range and increment parameters.
- All reports can be viewed, printed or stored as disk files for later retrieval or importing into other applications.

See Theta's web site at <http://www.theta-us.com> for the latest information and updates for DilaSoft I for Windows software.

Theta Industries, Inc. is committed to providing our customers the leading edge of technology, service and support with the finest instruments available.

Phone, fax or write for further information, pricing or upgrade options. Or see our Web site for more details, the latest news and demos.

* Value depends on instrument type.

Theta Industries, Inc. 26 Valley Road Port Washington NY 11050 USA
Phone: (516) 883-4088 Fax: (516) 883-4599 Internet: <http://www.theta-us.com> E-mail: theta@theta-us.com